



# Welcome to the Millennium Gallery





This is the Millennium Gallery. It is on a busy main road in the centre of Sheffield.

It is free to enter, and you will not need a ticket.

The entrance is step free and you can use the escalator or lift to visit the galleries on the upper floor.



At the entrance on Arundel Gate there is a welcome desk.

A member of staff will be there to help you and answer any questions. They wear a uniform like this.



On the ground floor there is a café. It is called Ambulo.

It can be busy here, particularly between 12 – 2pm.

They play music so it can be a little loud.



There are toilets and baby changing facilities on the ground floor.

There are no toilet facilities on the upper floor.



The galleries, shop and entrance to the Winter Garden are on the upper floor. You can choose to take the lift or escalator.

Ask a member of staff if you need any help accessing the upper floor.



The galleries are in rooms just like this one.

The artworks in some of them change regularly so they might be different when you visit. Sometimes the galleries close for changes to happen.

In the gallery people look at the art, take pictures, draw and talk about what they can see. You are not allowed to touch the artworks, but you can ask questions if you like.



This is the shop.



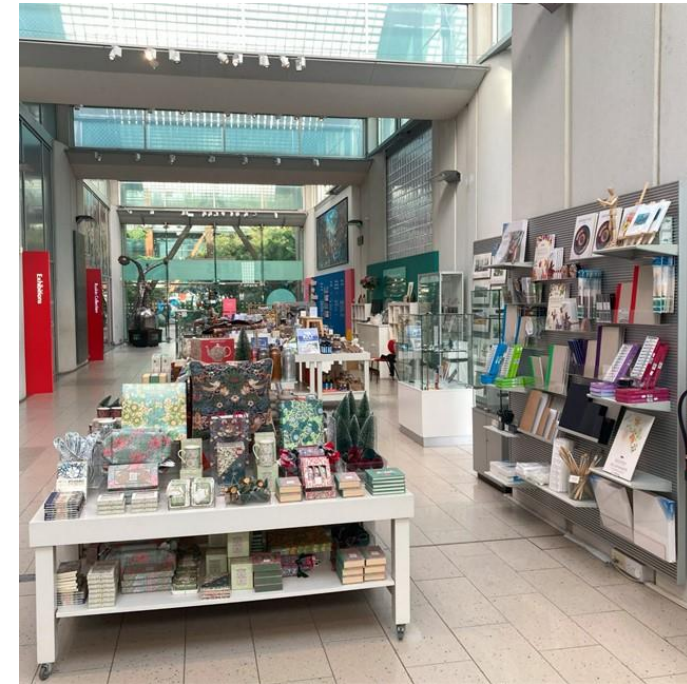


This is another entrance to the Millenium Gallery; it is in the Winter Garden.

There are lots of interesting plants, trees and displays to look around in here.

It is free to visit and has places to sit.

We hope you enjoy your visit to the Millennium Gallery.



Please get in touch if you'd like any more information about the gallery.

[info@sheffieldmuseums.org.uk](mailto:info@sheffieldmuseums.org.uk)

[sheffieldmuseums.org.uk](http://sheffieldmuseums.org.uk)